

VALUE THAT WORKS

GROUP PRODUCTS



SHANTUI

SE75

Crawler Excavator

Shantui-Europe
Tel: +31 (0)6 3727 7298
email: info@shantui.nl
website: <https://www.shantui.nl>

SHANTUI

Engine Model: Kubota V3307T
Gross Power: 54.6 kW/2200 rpm
Operating Weight: 7,650 kg
Bucket Capacity: 0.32 m³

All-round Champion
load sensing system

COMFORT



SAFE DRIVING AND RIDING

The new frame style cab significantly enhances strength and impact resistance, effectively ensuring driver safety.

COMFORTABLE CAB

Large space, wide field of view, ergonomic selection and arrangement of controls, convenient and comfortable operation. Adjustable wrist rest and floating seats help you work comfortably all day. The brand new interior is effectively matched with interior colors based on ergonomics, which is not easy to cause visual fatigue for operators.

HIGH POWER COOLING AND HEATING AIR CONDITIONING

High power air conditioning ensures driving comfort. Optimize the air conditioning duct to avoid leg blowing in summer and provide a more comfortable wind feel.

CAB CONFIGURATION

- Tea cup holder
- Coat hook
- Charging port
- Fire extinguisher
- Multi storage space



7-INCH SMART COLOR LARGE SCREEN

The 7-inch color large screen displays rich content and monitors the machine's operating status in real time. Integrate rich functions to enhance operating experience.

The new generation of human-machine friendly intelligent electronic control system allows you to fully control the working status of your machine.

POWER SELF CONTROL

Power control adjustments can be made at each gear speed, and the operator can adjust the action speed independently according to their own operating habits, making the operation more comfortable.

GPS MONITORING SYSTEM

S-star cloud platform enables real-time viewing of work reports and geography on mobile phones

RELIABILITY

RUGGED STRUCTURES

STRENGTHENING OF WORKING EQUIPMENT

Comprehensively optimize the structure of key parts and strengthen the stress positions, without fear of adverse working conditions.

BUCKET

The bottom plate, side plate, and reinforcing plate of the bucket are all made of high-strength wear-resistant materials to improve the durability of the bucket.

Based on the excavation trajectory of the bucket, optimize the bucket structure, reduce excavation resistance, and improve excavation efficiency.

FOUR WHEEL AREA

40 years of research and development and manufacturing experience in the four wheel area, mature forging heat treatment process, and stable and reliable quality.

TRACK FRAME

H-type track frame with strong load-bearing capacity and reasonable distribution of overall load



EASY MAINTENANCE

CENTRALIZED LAYOUT, CONVENIENT MAINTENANCE

High precision fuel filter element, centrally arranged at the right door, convenient for maintenance and upkeep. Glass water filling, air filter replacement, and power main switch within reach.

FULLY OPEN ENGINE HOOD

Fully open engine hood with positioning mechanism, easy and safe to open, large engine compartment space, convenient for maintenance and repair

ENGINE

The engine does not require a regeneration process, which reduces fuel consumption and operating costs compared to competing engines



OPTIONAL EQUIPMENT

ALL FOR YOUR SAFETY



Top guard and half front guard

Top guard and full front guard

Fuel/oil tanks guard

Full length, wire mesh guard

OPTIONAL ATTACHMENTS

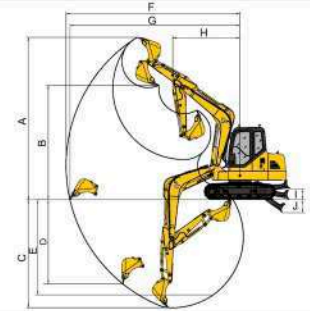


Standard with strengthened bucket, can be optional installation of soil loosener, hydraulic pliers, hydraulic shear, quick change connector, crushing hammer, hydraulic ram, etc.

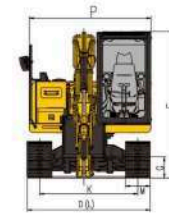
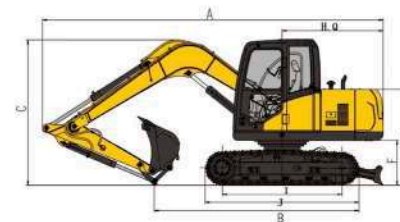
SPECIFICATIONS

ENGINE	
Model	Kubota V3307T
Type	4 Cylinders in line, Water cooling, Turbo charging
No. of cylinder	4
Emission	EU V
Displacement	3.3L
Power output	54.6kW/2200rpm
HYDRAULIC SYSTEM	
Type	Axial Variable plunger pump
Max. discharge flow	160L/min
DIGGING FORCE (ISO6015)	
Bucket	66 kN
Arm	38 kN
BUCKET	
Type	Backhoe bucket
Capacity	0.32m ³
Width	810mm
TRAVEL SYSTEM	
Type	Axial variable plunger motor
Track roller	5x2
Carrier roller	1x2
Track shoe	39x2
Travel speed	2.5/4.6 km/h
Max. Drawbar pull	69kN
Gradeability	70% (35°)
SWING SYSTEM	
Swing motor type	Swash plate plunger motor
Swing speed	0-10.5r/min
Brake type	Pressure release, mechanical braking
REFILLING CAPACITIES & LUBRICATIONS	
Fuel tank	155L
Cooling system	11L
Engine oil	11L
Hydraulic oil tank	75L
System Capacity	145L
OPERATING WEIGHT AND GROUND PRESSURE	
Shoe width	450mm
Ground pressure	34kPa
Operating weight	7650kg

SCOPE OF WORK (mm) (BOOM: 3710 mm ARM: 1650 mm)		
A	Max. digging height	7100
B	Max. dumping height	5105
C	Max. digging depth	3990
D	Max. vertical digging depth	3390
E	Max. depth cut for 2500mm level bottom	3660
F	Max. digging distance	6375
G	Max. digging radius at ground level	6220
H	Min. swing radius of work equipment	1950
I	Max lifting height of bulldozer	370
J	Max cutting depth of the bulldozer	225



DIMENSIONS (mm)		
A	Overall length	6240
B	Ground contact length (Transportation)	3735
C	Overall height (to top of boom)	2600
D	Overall width	2260
E	Overall height (to top of cab)	2680
F	Counter weight ground clearance	825
G	Ground clearance	385
H	Tail swing radius	1880
I	Tread	2195
J	Track length	2820
K	Track gauge	1800
L	Track width	2250
M	Shoe width	450
O	Bonnet height	1755
P	Revolving frame width	2230
Q	Distance from swivel center to tail	1850



* The specifications are subject to change without notice. The pictures may include options. The actual color & appearance of the product may differ from what is shown.

WALK-AROUND

ENHANCED WORKING DEVICE

- Comprehensively optimize the structure of key parts and strengthen stress-bearing locations to avoid harsh working conditions.

BUCKET CONFIGURATION UPGRADE

- The bucket bottom plate, side plates and reinforcement plates are all made of high-strength and wear-resistant materials to improve the bucket's durability.
- According to the bucket excavation trajectory, the bucket structure is optimized to reduce excavation resistance and improve excavation efficiency.



7-inch smart color large screen

- The 7-inch color large screen displays rich content and monitors the machine's operating status in real time.
- Integrate rich functions to enhance operating experience.
- The new generation of human-machine friendly intelligent electronic control system allows you to fully control the working status of your machine.



POWERFUL KUBOTA ENGINE

- The engine complies with China IV emissions and is equipped with a turbocharged engine as standard, with large displacement and fast response.
- Load-sensitive hydraulic system brings smooth action and fast speed. The electronically controlled variable pump can achieve perfect matching between the engine, pump and valve.

NEW DESIGN RADIATOR

- High-precision fuel filters are centrally located on the right door for easy maintenance.
- Glass water filling, air filter replacement, and main power switch are within easy reach.
- The fully open engine hood is equipped with a positioning mechanism, which makes it easy and safe to open. The engine compartment is large and convenient for maintenance and repair.

NEW DESIGN RADIATOR

- Kawasaki hydraulic system, high-end and reliable, reduce energy loss, high efficiency and energy saving, good operation coordination.



UNDERCARRIAGE

- 40 years of R&D and manufacturing experience in undercarriage area, mature forging heat treatment process, stable and reliable quality.
- H-type crawler frame, strong load-bearing capacity, reasonable load distribution of the whole machine.

